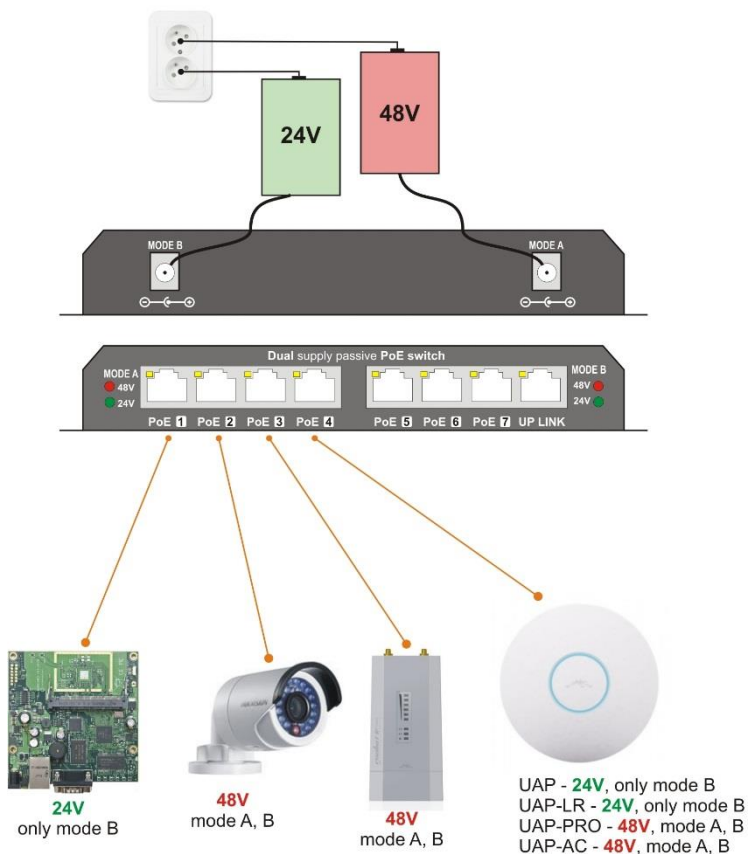


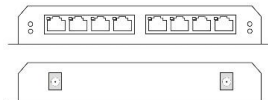


POES-8-7P switch allows you to power up to 7 devices remotely over ethernet wiring up to 328 ft (100 meters) away.

Use this device to inject power and data into the CAT-5, CAT-6 or CAT-7 cable. Compact and low power, this new PoE passive injector with integrated 8 port fast ethernet switch provides data and power to any 802.3af device with always-on power. You can also power this PoE switch remotely via the PoE+Data uplink port.

Each PoE port has self resetting fuses. Use our rack mount for two in a 1U high rack for 14 PoE ports.





#### Features:

- 8 switch ports with 10/100 Mbps auto detect with status LED
- 7 PoE outputs with either Mode A and/or Mode B
  - Mode A (camera, VoIP,...anything supports 802.3af or 802.3at)
  - Mode B (MikroTik, Ubiquiti,...)
- Dual PTC fuses on each PoE output port
  - Mode A (650mA / port)
  - Mode B (1000mA / port)
- 18 volt to 56 volt operation
- 3 power supply inputs
  - 2x 2.1mm connector (classical dimension)
    - Mode A (1,2 (-) a 3,6 (+))
    - Mode B (4,5 (+) a 7,8 (-))
    - LED indicates 18/24 volt operation or 48/56 volt operation
    - Maximum input current per mode – 2.5 amps
  - Mode B PoE power input from the uplink port – 1.25 amps
- Dual power supply operation
  - Redundancy – 48V 802.3af, 802.3at // 48-56V
  - Load balancing - 48V 802.3af, 802.3at // 48-56V
  - Mixed voltage - Mode A at 48V (802.3af,...) and Mode B at 24V (MikroTik, Ubiquiti,...)

#### Specifications:

- Input power: 18 to 56V, 90W
- Supported standards: passive (24 a 48V), active (802.3af, 802.3a)
- Data: 1,2 a 3,6
- Power: 1,2 and 3,6 (Mode A), 4,5 and 7,8 (Mode B)
- Weight: 500g
- Data rate: 10/100Mbps
- Connector: 8x RJ45
- Operating temperature: 0 ~ 40°C
- Storage temperature: -40 ~ 70°C
- Operating humidity: 10% - 80%
- Storage humidity: 5% - 90%
- Certification: CE & FCC
- Case material: metal
- Dimensions: 192 x 82 x 27mm